

POSITIONAL PICKS BY MANAGER

Managers and Picks	1	2	3	4	5	6	7	8	9	10	11	12	13	14	15	16
Andy	RB	RB	WR	WR	WR	RB	RB	RB	WR	WR	TE	WR	RB	QB	K	D/ST
Ben	WR	RB	RB	TE	D/ST	RB	QB	WR	WR	QB	WR	TE	TE	RB	K	D/ST
Brock	WR	WR	WR	WR	RB	QB	TE	K	RB	RB	D/ST	RB	RB	TE	WR	WR
Charles	TE	RB	RB	QB	K	RB	WR	WR	WR	WR	D/ST	WR	D/ST	TE	WR	TE
Chewie	RB	RB	WR	RB	WR	WR	WR	QB	TE	RB	WR	WR	RB	D/ST	K	QB
Chris	RB	RB	K	WR	WR	WR	D/ST	TE	RB	WR	QB	RB	RB	WR	WR	TE
Derrek	WR	WR	RB	K	WR	RB	WR	TE	D/ST	QB	WR	QB	WR	TE	RB	RB
Jared	RB	RB	WR	WR	D/ST	K	WR	WR	TE	QB	WR	RB	RB	RB	RB	WR
Michael	WR	RB	WR	RB	WR	QB	QB	RB	TE	RB	WR	WR	WR	D/ST	RB	K
Pete	QB	TE	RB	TE	RB	WR	WR	QB	WR	WR	RB	RB	WR	D/ST	K	TE
Scott	WR	RB	WR	RB	RB	D/ST	WR	TE	WR	WR	TE	RB	K	QB	WR	RB
Seth	RB	WR	RB	K	WR	TE	QB	RB	WR	D/ST	WR	TE	RB	RB	QB	WR

COUNT OF POSITIONS BY MANAGER PICK

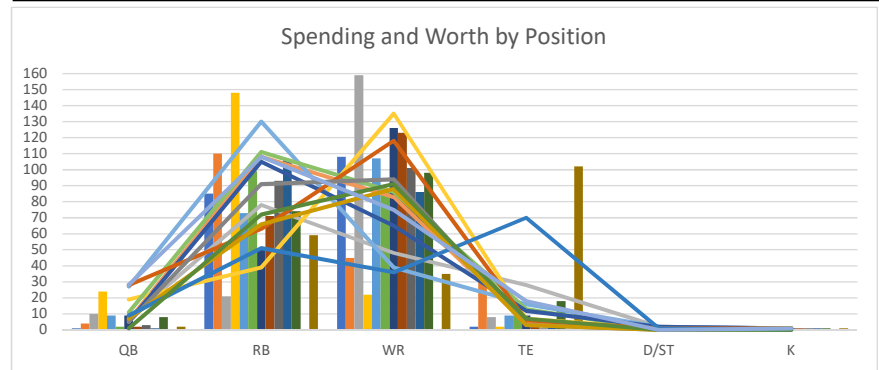
PICK	1	2	3	4	5	6	7	8	9	10	11	12	13	14	15	16
QB	1	0	0	1	0	2	2	2	0	3	1	1	0	2	0	1
RB	5	8	4	3	3	4	1	2	2	3	1	5	5	2	3	2
WR	5	2	6	4	5	3	6	3	5	5	5	4	3	1	4	2
TE	1	1	0	2	0	0	1	3	3	0	2	1	1	3	0	3
D/ST	0	0	0	0	2	1	1	0	1	0	2	0	1	3	0	2
K	0	0	1	1	1	1	0	1	0	0	0	0	1	0	4	1

MANAGER SPENDING BY POSITION

Manager and Position:	QB	RB	WR	TE	D/ST	K	Spent	
Andy		\$1	\$85	\$108	\$2	\$1	\$1	\$198
Ben		\$4	\$110	\$45	\$37	\$2	\$1	\$199
Brock		\$10	\$21	\$159	\$8	\$1	\$1	\$200
Charles		\$24	\$148	\$22	\$2	\$2	\$2	\$200
Chewie		\$9	\$73	\$107	\$9	\$1	\$1	\$200
Chris		\$2	\$99	\$87	\$9	\$1	\$1	\$199
Derrek		\$9	\$51	\$126	\$9	\$1	\$1	\$197
Jared		\$2	\$71	\$123	\$2	\$1	\$1	\$200
Michael		\$3	\$93	\$101	\$1	\$1	\$1	\$200
Pete		\$2	\$59	\$35	\$102	\$1	\$1	\$200
Scott		\$1	\$106	\$86	\$3	\$3	\$1	\$200
Seth		\$8	\$74	\$98	\$18	\$1	\$1	\$200
Total		\$75	\$990	\$1,097	\$202	\$16	\$13	\$2,393

LEAGUE SPENDING BY POSITION

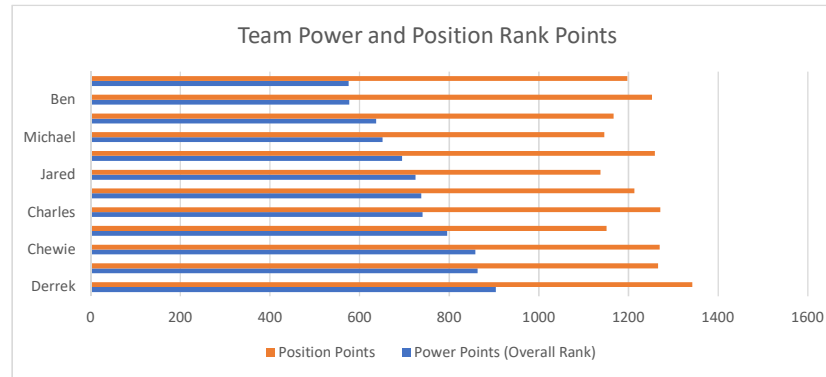
Position	Count	Spent	Average/P	FPValue	Value	Avg Spent	Avg Val
QB	18	\$75	\$4.17	\$153	\$78	\$4	\$4.33
RB	57	\$990	\$17.37	\$1,022	\$32	\$17	\$0.56
WR	68	\$1,097	\$16.13	\$958	-\$139	\$16	-\$2.04
TE	23	\$202	\$8.78	\$187	-\$15	\$9	-\$0.65
D/ST	14	\$16	\$1.14	\$10	-\$6	\$1	-\$0.43
K	12	\$13	\$1.08	\$10	-\$3	\$1	-\$0.25



MANAGER VALUE BY POSITION

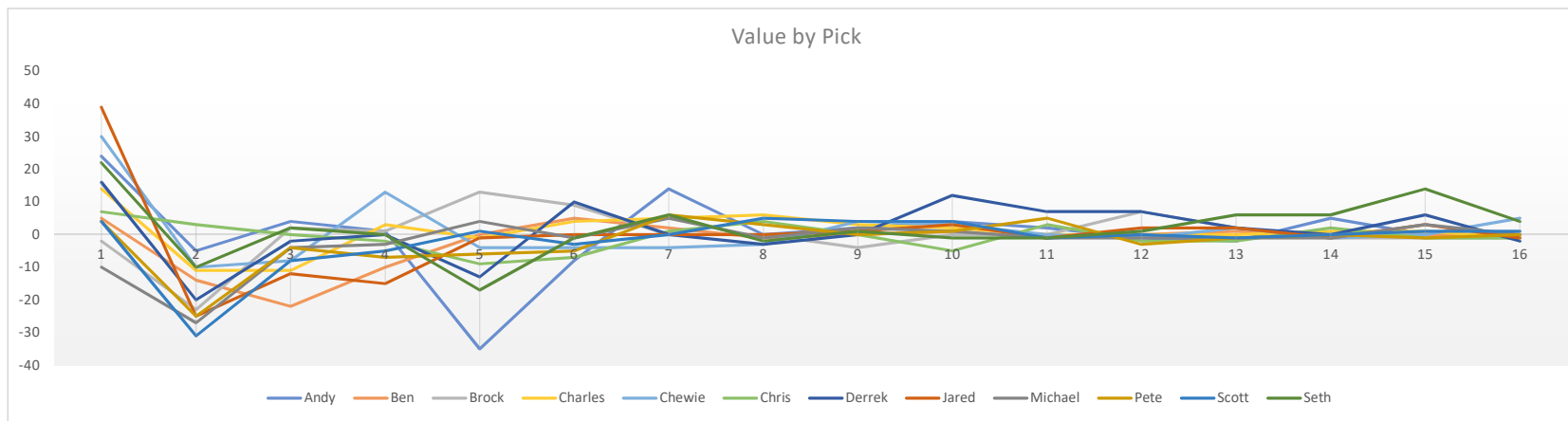
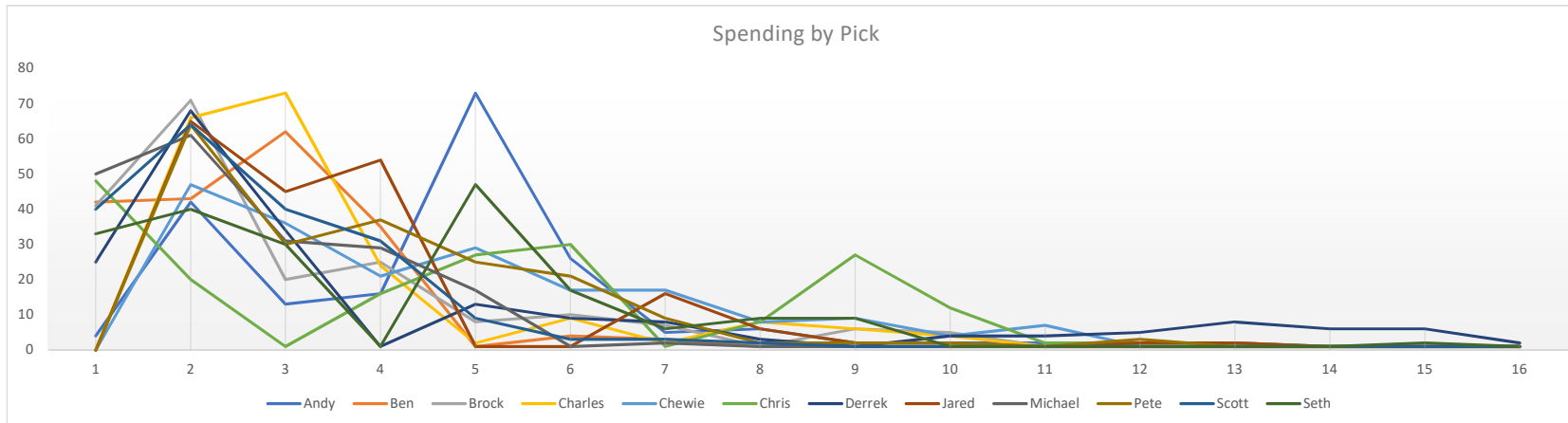
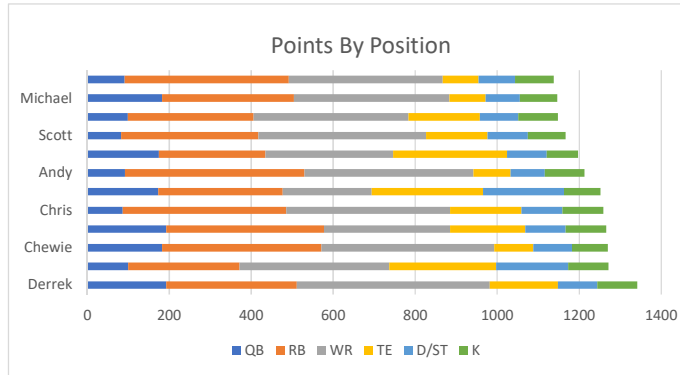
Manager and Position: QB	RB	WR	TE	D/ST	K	Value	
Seth	20	34	-23	0	-1	0	30
Chewie	\$2	\$38	-\$21	\$4	-\$1	\$0	\$22
Derrek	\$19	\$12	-\$8	-\$3	\$0	\$0	\$20
Charles	\$3	-\$18	\$17	\$14	\$0	-\$1	\$15
Andy	\$5	\$23	-\$25	\$2	\$0	\$0	\$5
Brock	\$9	\$18	-\$24	-\$1	\$0	\$0	\$2
Jared	\$3	\$20	-\$29	\$1	-\$1	\$0	-\$6
Chris	\$3	\$6	-\$22	\$3	\$1	\$0	-\$9
Scott	\$0	-\$34	\$5	\$4	-\$3	-\$1	-\$29
Pete	\$7	-\$8	\$1	-\$32	\$0	-\$1	-\$33
Ben	\$3	-\$32	\$3	-\$9	\$0	\$0	-\$35
Michael	\$4	-\$27	-\$13	\$2	-\$1	\$0	-\$35
Total	\$78	\$32	-\$139	-\$15	-\$6	-\$3	-\$53

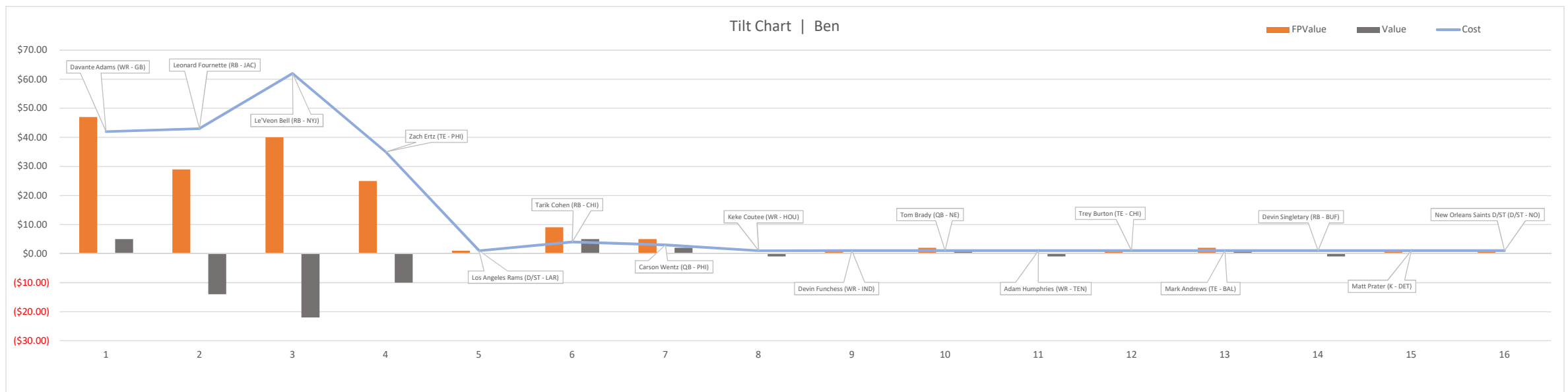
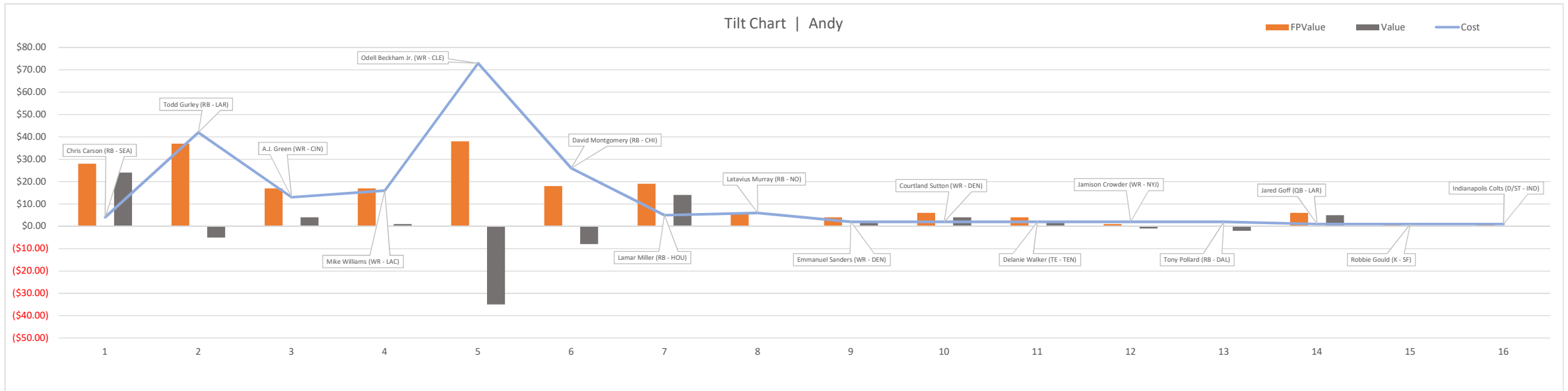
Team	Power Points (Ove	Position Points
Derrek	904	1342
Seth	863	1266
Chewie	858	1270
Brock	795	1151
Charles	740	1271
Andy	738	1213
Jared	725	1138
Chris	695	1259
Michael	651	1146
Scott	637	1167
Ben	577	1252
Pete	575	1197

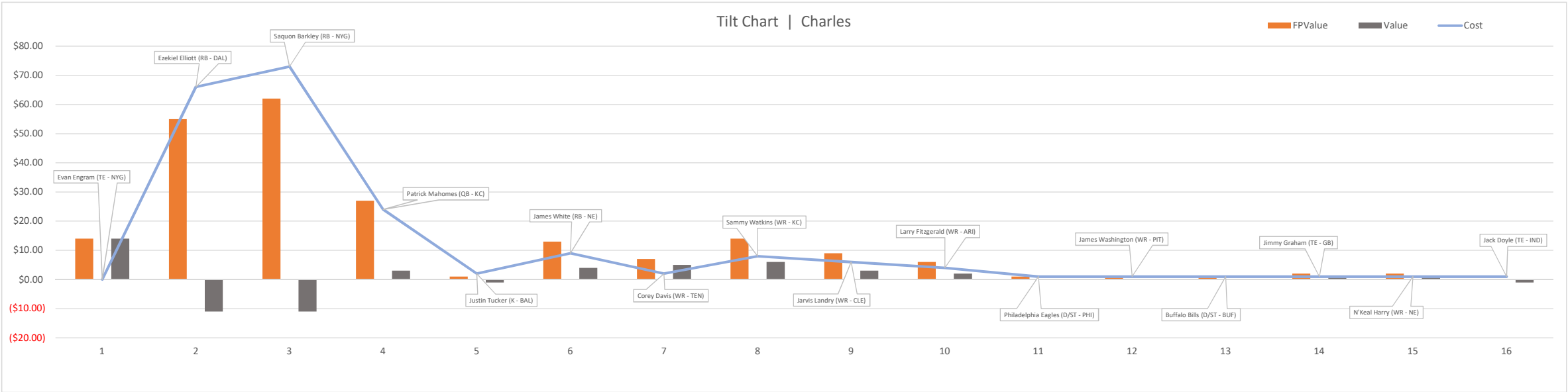
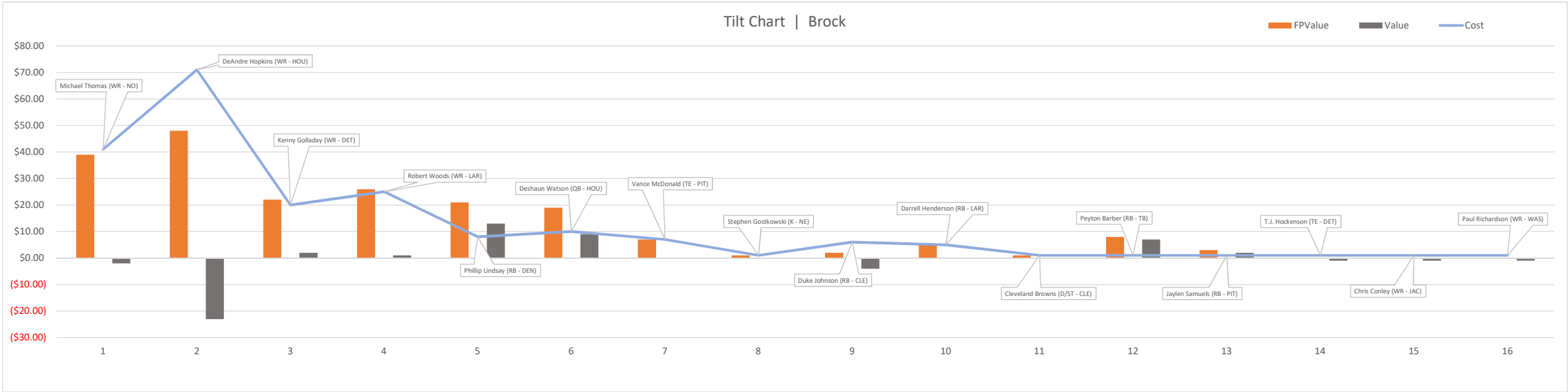


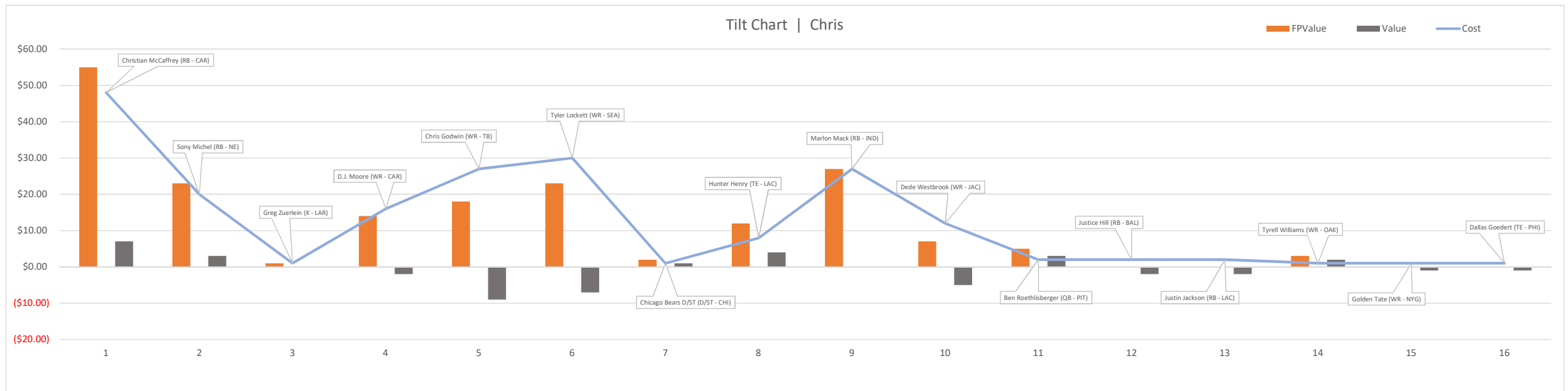
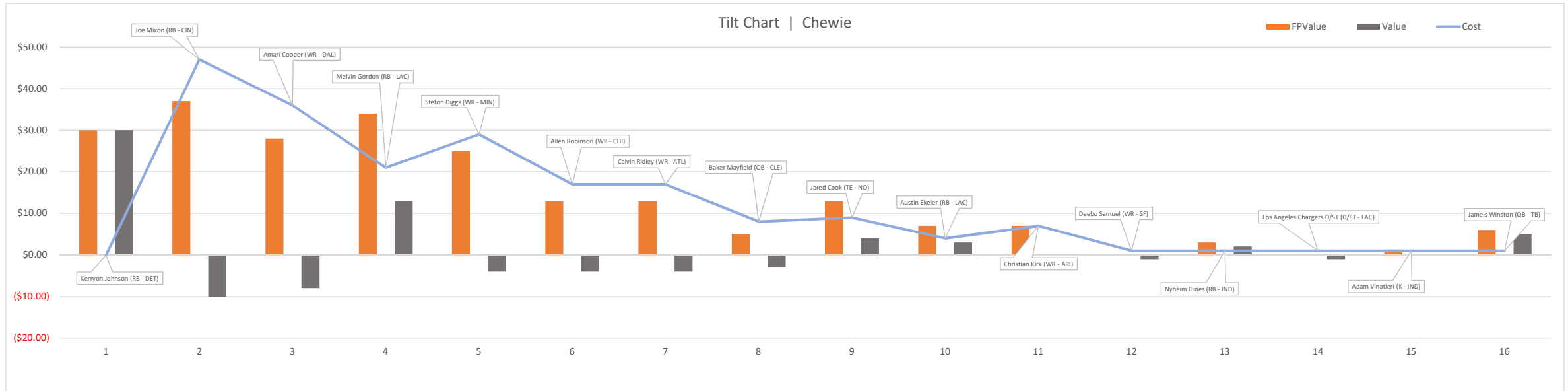
POINTS BY POSITION

Manager	QB	RB	WR	TE	D/ST	K	Total	Column1
Derrek	193	318	471	166	96	98	1342	A+
Charles	100	271	366	260	176	98	1271	A
Chewie	183	388	422	95	95	87	1270	A
Seth	193	385	307	184	98	98	1266	A
Chris	87	398	400	174	100	100	1259	B+
Ben	173	304	217	272	197	89	1252	C+
Andy	92	438	412	90	84	97	1213	B
Pete	175	260	311	278	97	76	1197	C+
Scott	83	335	408	150	99	92	1167	C-
Brock	99	307	378	174	93	97	1148	A-
Michael	183	321	379	89	83	91	1146	C
Jared	91	401	375	88	88	95	1138	B+

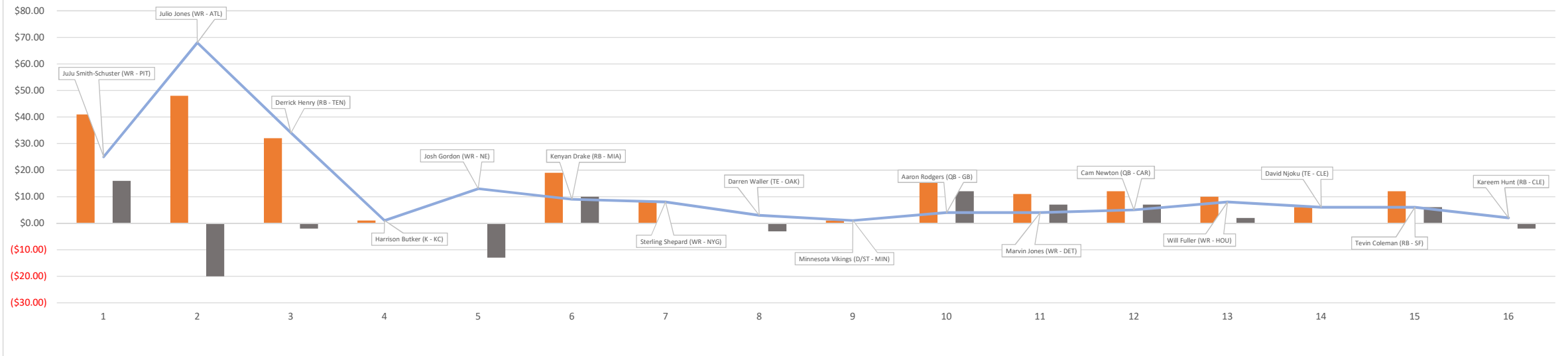








Tilt Chart | Derrek



Tilt Chart | Jared

